

Educational Goal

MEET-U spreads awareness of energy creation, development and utilization through a partnership with the Friends of Drake Well, Inc. and Drake Well Museum and Park by educating school children and the public on the historic and modern uses of energy in the hope they will improve the future of energy consumption.

Since MEET-U hit the road in July 2009, nearly 150,000 people have seen the exhibits. The demand for MEET-U has grown beyond what anyone could have imagined and we look for the program to continue to grow throughout the coming years.



How Does My Company Join the MEET-U Team?

Join the MEET-U team by contributing products, in-kind services or a monetary donation.

For more information about how your company could get your logo on the MEET-U trailer, please visit drakewell.org and click the "MEET-U" tab for current sponsorship opportunities!!

MEET-U

205 Museum Lane Titusville, PA 16354

www.drakewell.org

501 (c) 3 Tax Exempt

EIN251457038

Friends of Drake Well, Inc. Presents



MEET-U

Mobile Energy Education Training Unit

205 Museum Lane
Titusville, PA 16354
(814)827-2797

meetunit@gmail.com

501 (c) 3 Tax Exempt
EIN251457038



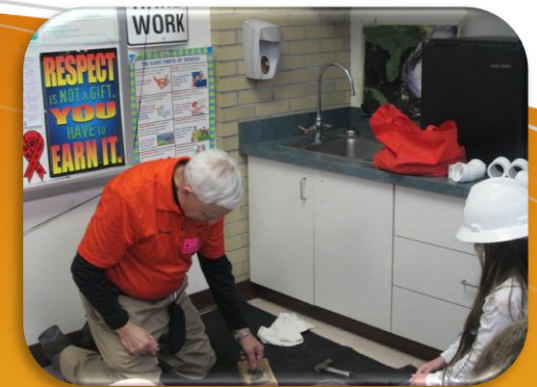
MEET-U Trailer Program

The MEET-U Trailer season begins in April when the forty-four foot MEET-U trailer comes out of winter storage. The MEET-U team not only visits schools during the months school is in session, but educates the general public as well. Through the summer months we attend fairs, festivals, community events, and industry functions to spread awareness of energy creation, development, and conservation.

MEET-U in the Classroom

Targeted at middle school students and now offered year-round, this program brings hands-on energy lessons directly to the classroom and gives teachers the option of different 45-minute programs on energy, history, and science.

A highlight of MEET-U in the Classroom is its redesigned Energy program. This lesson combines a 10 minute PowerPoint presentation with 30 minutes of small group activities on petroleum geology, pipelines, and recycling. These group activities are very hands-on and student centered. For example, during the petroleum geology activity, students use “seismic boards” with cutout oil deposits to map out the best places to drill, leading to discussions on the process of finding oil and natural gas. Students also get the opportunity to face common industry challenges while building a pipeline to transport a golf ball from one area of the classroom to another.



Contact us today to schedule your school!



April 6, 2016

Friends of Drake Well, Inc. supports Drake Well Museum and Park, which is administered by the Pennsylvania Historical and Museum Commission.
Tom Wolf, Governor.

